

LUMI™ DRUG SCAN

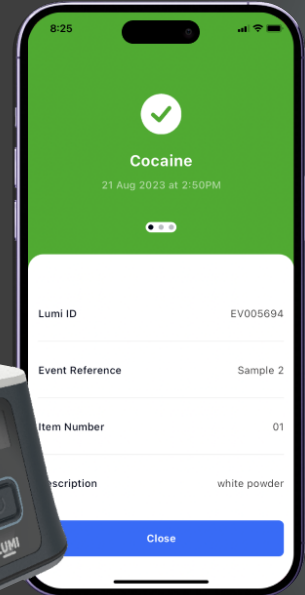
Designed by science.
Trusted by the front-line.

A drug testing solution in your hand.
Safe, fast, easy and accurate.

Lumi by **E/S/R**
Science for Communities



www.lumidrugscan.com



Lumi™ Drug Scan lets front-line officers quickly and accurately test suspected drug samples on the spot. Using the Lumi Nano portable NIR device, the Lumi Analysis app, and powerful cloud-based AI engine, Lumi delivers instant results to detect illicit drugs in real-time.

Lumi is the **best choice** for the **front-line**.



Safe

Analysis of items within plastic packaging protects front-line staff from exposure.



Accurate

AI-powered drug analysis for accurate forensic results.



Fast

Analysis results presented in the app within seconds.



Secure

End-to-end encryption with all data securely stored in the cloud.



Easy

Developed with front-line for ease and speed, including automated reporting.



Integrated

Mobile app and data analytics for comprehensive insights.



Portable

Small, lightweight and fits in the palm of your hand.



Long-lasting

Up to 1000 scans on a single charge and 3 months on standby.



Tough

Dust and water resistant, with a waterproof, highly protective pelican carry case.

www.lumidrugscan.com

Email: lumi.info@esr.cri.nz
Phone: +64 9 815 3670

Mt Albert Science Centre
120 Mt Albert Road, Mt Albert
Auckland 1025, New Zealand

©2024 Lumi™ Drug Scan

“When you show them the **evidence** right then and there on Lumi saying: ‘This is what it’s come back with, it’s clear to both of us what the **substance** is’, it makes it **easier** to interact with them.”

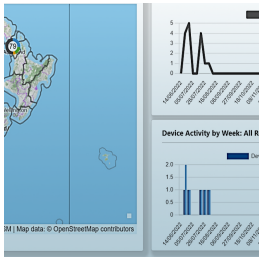
– New Zealand Police officer

LUMI DRUG SCAN



Secure by Design

The Lumi Nano device and Lumi Analysis app feature end-to-end encryption with secure Bluetooth pairing. The app is deployed privately, with enterprise authentication controlling access and data. Security is independently assessed, law enforcement-aligned, and includes encrypted, backed-up data with multi-factor authentication for enhanced protection.



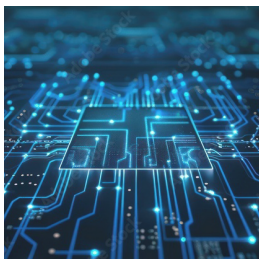
Analytics Dashboard

Gain insights across your jurisdiction with spatial and temporal drug trends visualised in the Lumi Analytics Dashboard. This supports data-informed decision-making, enabling more effective tasking and deployment within police management.



Electronic Evidence Record

The Lumi Analysis app workflow, co-designed with front-line law enforcement, is intuitive and responsive, delivering results instantly. It creates an electronic evidence record for every sample with a digital chain of custody. Automated analysis summaries are emailed to officers, supporting case file management and disclosure.



Cloud-based AI

The advanced Lumi AI engine detects drugs, with regular cloud-hosted updates eliminating the need for device updates. Developed from street-intercepted samples and supported by forensic drug analysis, it ensures reliability, backed by forensic laboratory validation.



Front-line Readiness

Lumi is a portable, durable device that delivers rapid drug analysis anywhere, with results in seconds. It tests through plastic bags to ensure safety and sample integrity. Complete with training, deployment support, and an online help site, it's designed for efficient front-line decision-making.